

## 3210 SERIES DATA SHEET

Type	FGIA/ AAMA RATING	Test Size (in.)	Design Pressure (psf)	Water (psf)	Air (cfm/sf @ 1.57 psf)	U-Factor* (btu/h-ft <sup>2</sup> -°F)	CRF	STC/ OITC*
Horizontal Slider	CW-PG50-HS	71 x 60	50	7.5/10.0	0.03	0.35	65	n/a

\*Performance varies based on glass selection, contact WinTech for project specific performance. U-Factor based on 1" IGU with soft-coat low-e and argon.

WinTech's products are tested and certified in a controlled laboratory environment. Field performance will vary due to installation methods, environmental conditions, and product configuration.

### STANDARD FEATURES:

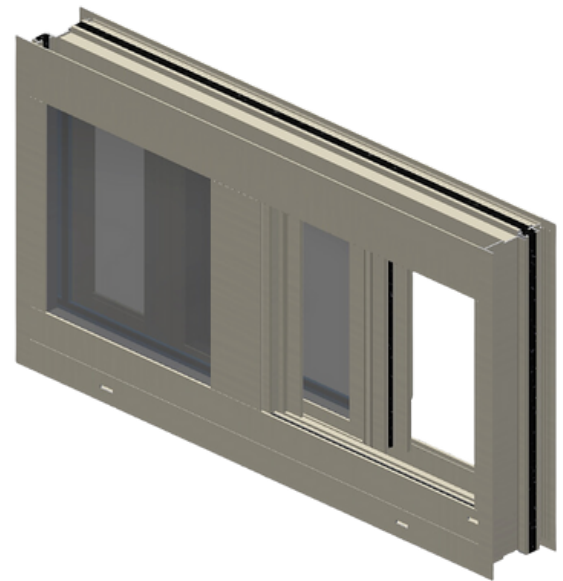
- Frame Depth: 3-1/4"
- Typical Wall Thickness: 0.078"
- Standard Infill Options: 1/4" & 1"
- Std. Hardware: Sweep lock; Rollers
- Min Size:
  - XO or OX: 24" x 18"
  - XOX: 40" x 18"
  - OXO: 28" x 18"
- Max Size:
  - XO or OX: 72" x 72"
  - XOX: 142" x 60"
  - OXO: 106" x 60"

### ACCESSORIES:

- Subframe/receptor system
- Panning
- Interior Trim
- Mullions
- Nail Fin

### SPECIFICATIONS:

- AAMA/WDMA/CSA/101/I.S.2/A440 (NAFS)
- AAMA 1503
- AAMA 2604 & 2605
- NFRC 100/200/500
- ASTM E90
- ASTM E1332



### CONFIGURATIONS:

