



C225 NON THERMAL WINDOW INSTALLATION INSTRUCTIONS

- This window contains one of the following jamb fin kits:

R (Regular) Fin (E91) **A (Architectural) Fin (E92)** **Straight Fin (E93)** **AG (3/4" Panel) (E94)**

- The following instructions apply to the **horizontal slider, fixed narrow lite and single hung**.
- Typically windows are shipped with one pair of exterior jamb trim and optional (if ordered) interior insulation retainers.**
- The window system is designed to be **installed from the inside of the building** after the building has been skinned with wall panel. **The jamb fins install on the inside of the wall panel.**

Installation steps:

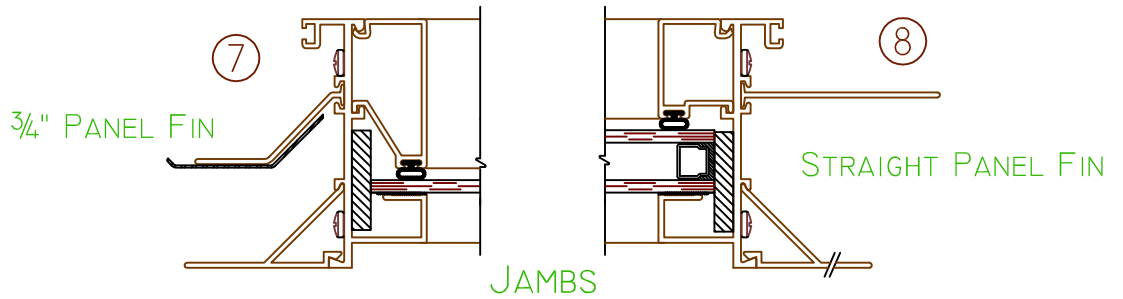
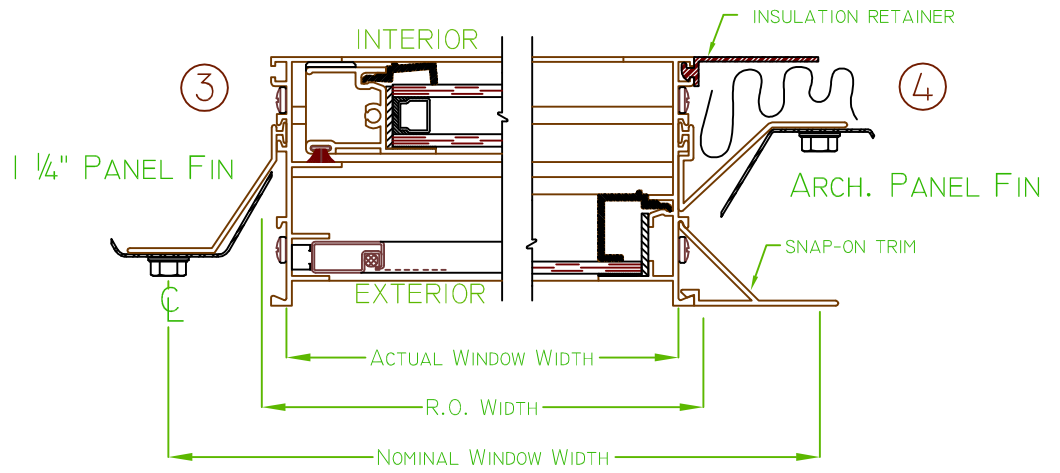
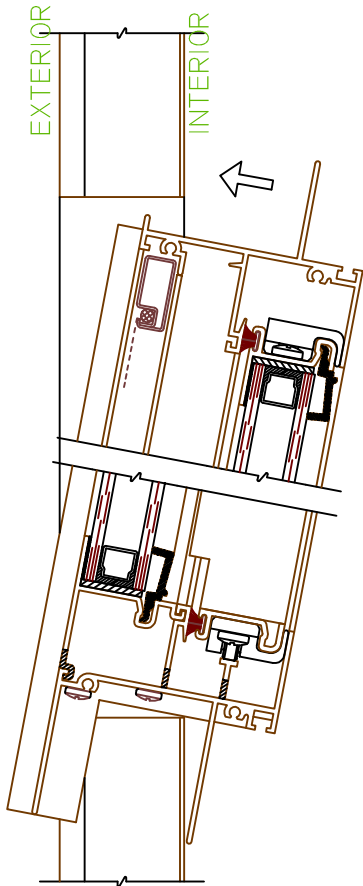
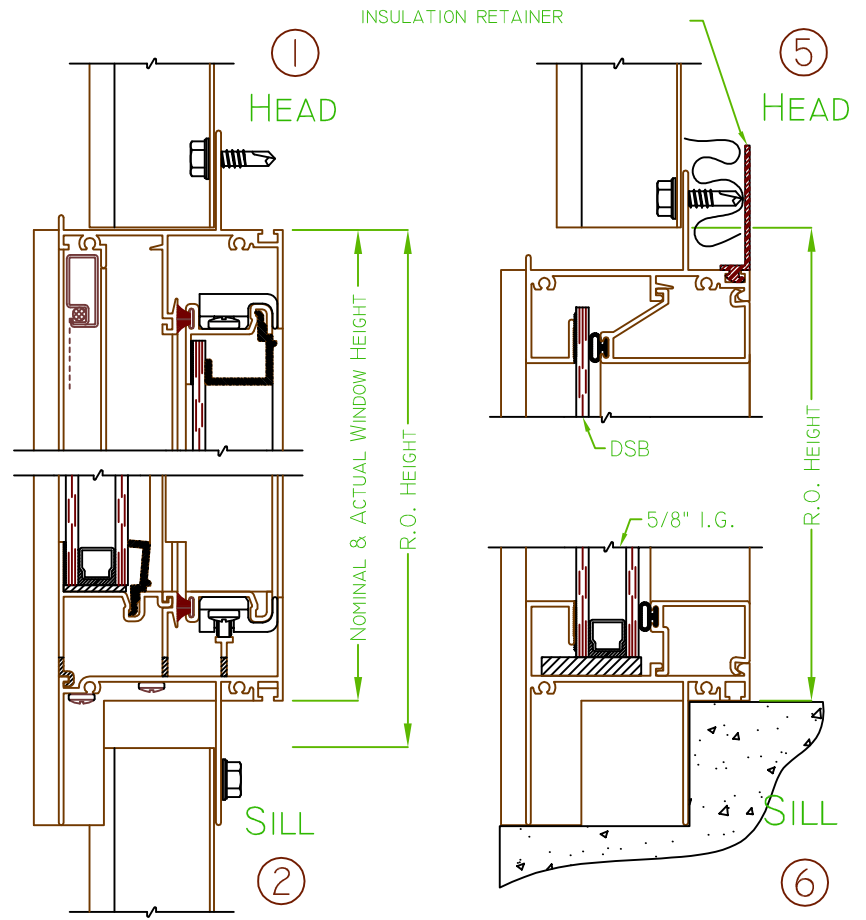
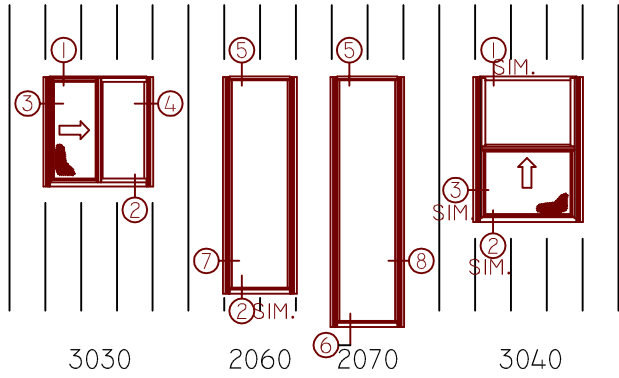
- Select the location for the window and cut out the wall panel to the required rough opening size. The table below gives the minimum rough opening dimensions. Note that the **R Panel Fin** and **A Panel Fin** are both designed to be installed **only on the rib** of the wall panel. The Straight Fin is designed to be installed **only on the flat** of the wall panel. Details 3 and 4 on the back show how the panel ribs must appear after the wall cutout is made (see Detail 8 for the straight fin).
- Insert the jamb fin into the extruded groove on each side of the window by sliding the fin in from the top of the window. **The jamb fin should end up flush with the top of the window head fin. Seal between the window head fin and the jamb fin.** This seal prevents water that does get behind the wall panel from leaking behind the jamb fins.
- The optional insulation retainers trim out the interior of the window at the top, bottom and on both sides. The retainers hold the batt insulation against the window frame and are also handy as an extension of the window legs for attachment of interior finishes such as drywall and stools.
- Install the four insulation retainers in the window first. The insulation retainers can be installed after the window is anchored to the wall panel, but it is easier if done before the window is put into the opening. Slide the flexible insulation retainers into the groove on the four interior sides of the window. Notch back the tongue of the retainer (the part that slides into the window groove) at least 1 1/2" on both ends of either the horizontals or verticals. This lets the retainers overlap nicely at the four corners of the window.
- Install the window from the inside of the building by setting the window sill over the bottom panel and rocking the window into the opening until the jamb fins make contact with the inside of the wall panel.
- Raise the window up as high as possible in the wall panel opening before fastening.** This provides a small joint to seal at the head.
- Place the inside foam closure between the inside of the wall panel and the head fin at the top of the window, and the outside foam closure between the outside of the wall panel and the exterior leg of the window sill. The foam closures control air infiltration, especially at the sill.
- Secure the window to the wall panel on all four sides with self tapping wall panel screws (by others). **Screws are put in from the outside of the building on the window head and jambs and from the inside at the sill.** The screws at the head and sill also hold the foam wall panel closures in place. Lift up the sill insulation retainer as required to apply the screws at the sill (see Detail 2 on the back page).
- Caulk the full width of the wall panel across the top of the window. This seal is to prevent water leakage at the head. Sealant must also be applied from the exterior on both sides between the window jambs and the wall panel.
- Attach the exterior jamb trim by snapping it into place. This trim must be installed before the jamb sealant in 9. cures.

Any questions? Call WinTech at 800-365-4924, Monday through Friday, 8am to 5pm CST.

							Nominal Window Height (ft)	Actual Window Height
	9 7/8" x 84 1/2"	21 7/8" x 84 1/2"					7/0	84"
		21 7/8" x 72 1/2"					6/0	72"
		21 7/8" x 66 1/2"					5/6	66"
			33 7/8" x 60 1/2"				5/0	60"
			33 7/8" x 48 1/2"	45 7/8" x 48 1/2"		69 7/8" x 48 1/2"	4/0	48"
			33 7/8" x 36 1/2"	45 7/8" x 36 1/2"	57 7/8" x 36 1/2"	69 7/8" x 36 1/2"	3/0	36"
			33 7/8" x 24 1/2"			69 7/8" x 24 1/2"	2/0	24"
		21 7/8" x 18 1/2"					1/6	18"
Nominal Window width	1/0	2/0	3/0	4/0	5/0	6/0		
Actual Window width	9 1/2"	21 1/2"	33 1/2"	45 1/2"	57 1/2"	69 1/2"		

WINTTECH

WINDOWS



HALF SCALE