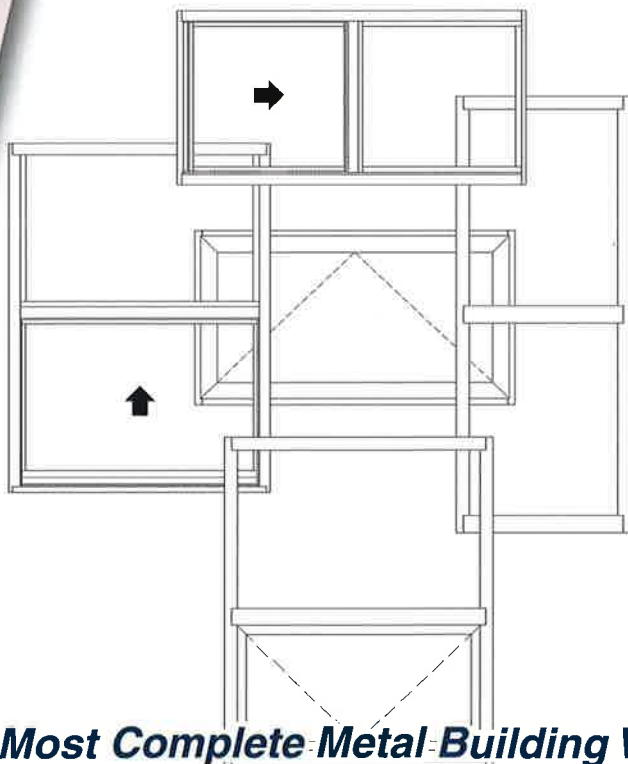


# WINTTECH

AN EMPLOYEE OWNED COMPANY

**2500 / S250 Series**



## **Today's Windows for Today's Metal Buildings!**

- Simulated and Tested Thermal Performance
- Better Air, Water and Structural Rating than Previous Systems
- More Options (glass, finish, etc.)
- More Architectural Configurations
- Fins and accessories available for masonry, IPS, stucco & pre-assembled in WinTech steel framed openings.

***The Most Complete Metal-Building Window System on the Market.***

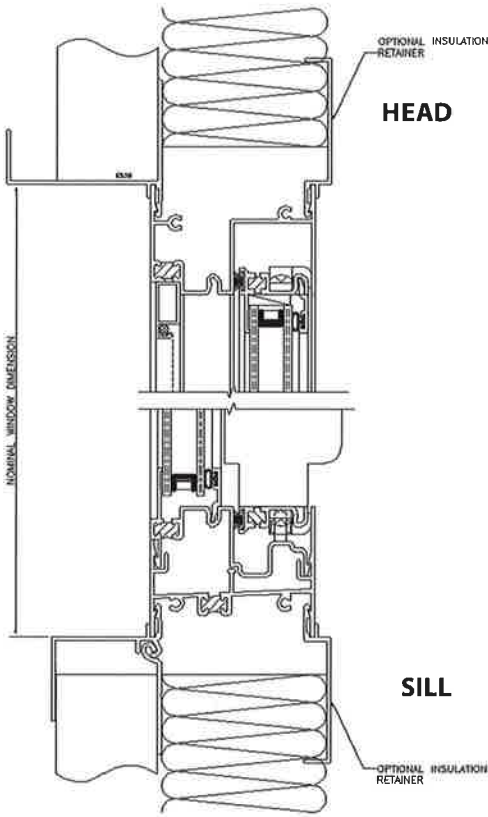
P.O. Box 480, Monett, MO 65708 • 800.365.4924 • [www.wintechinc.com](http://www.wintechinc.com)



# WINTECH

AN EMPLOYEE OWNED COMPANY

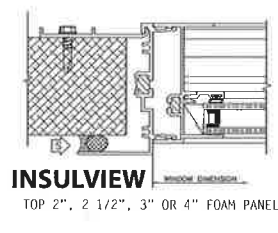
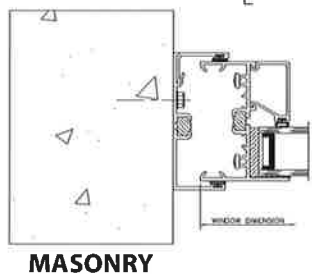
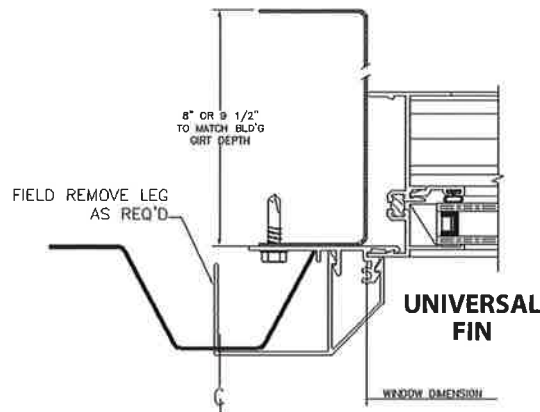
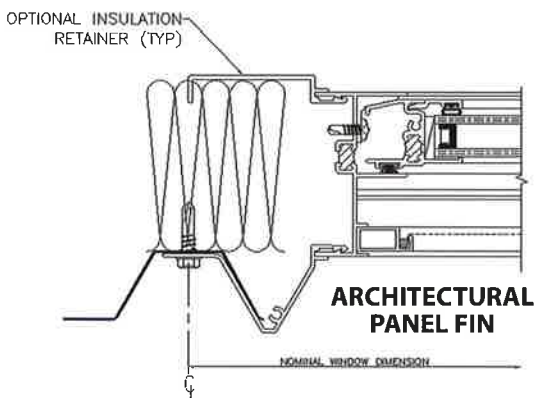
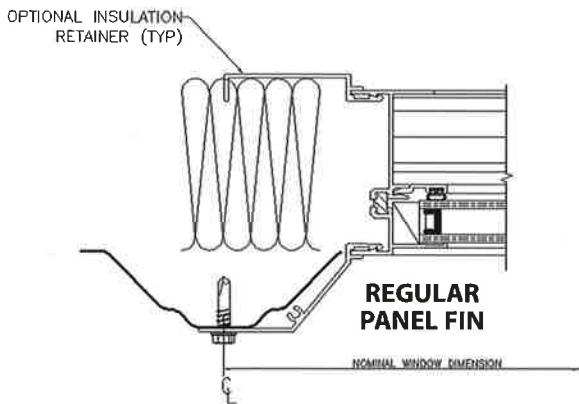
800.365.4924 • www.wintechinc.com



Window Configuration	Center of Glass - CLR IG			Total Window* - CLR IG	
	U Value	SHGC	VLT	U Value	SHGC
XO Slider	0.496	0.762	81%	0.600	0.640
Fixed	0.483	0.763	81%	0.530	0.690
Projected	0.483	0.763	81%	0.620	0.540
Single Hung	0.496	0.762	81%	0.600	0.630

Window Configuration	Center of Glass - BRZ IG			Total Window* - BRZ IG	
	U Value	SHGC	VLT	U Value	SHGC
XO Slider	0.495	0.628	61%	0.600	0.520
Fixed	0.483	0.626	61%	0.530	0.550
Projected	0.483	0.626	61%	0.620	0.440
Single Hung	0.495	0.628	61%	0.600	0.510

Window Configuration	Center of Glass CLR LOW E IG			Total Window* CLR LOW E IG	
	U Value	SHGC	VLT	U Value	SHGC
XO Slider	0.312	0.253	44%	0.460	0.220
Fixed	0.306	0.243	44%	0.390	0.250
Projected	0.306	0.243	44%	0.510	0.210
Single Hung	0.312	0.253	44%	0.460	0.240



Data was calculated using Windows 6.3 computer program with NFRC validated spectral data files.

+ Data was calculated using DSB Clear & DSB Bronze insulated glass and DSB Clear Low E Glass (Guardian Low E 55/27 #2 surface)

\* Total window results are an average of several common window sizes per configuration



scan for more information